

VINYL SHEET INSTALLATION INSTRUCTIONS

STEP 1 INSPECT AND PREPARE SUBFLOOR

IF INSTALLING OVER:

Old Vinyl Flooring

INSPECT:

Must be non-cushioned backed and firmly bonded. Check for loose vinyl, gapped seams, cuts, tears, rips, or other damage.

PREPARE:

- Utility Knife (to remove loose vinyl)
- New Beginning Extra Strength Cleaner (removes dirt and wax build-up)
- S-199 One-Part Embossing Leveler (fills and levels embossing on your old vinyl flooring)
- Smooth Edge Trowel (for applying S-199)
- Sanding Block (use medium grit sandpaper for smoothing rough areas of the embossing leveler)

IF INSTALLING OVER:

Plywood

INSPECT:

If installing a new plywood subfloor, use APA Underlayment Grade. For a new or existing plywood subfloors, check for loose panels, gapped joints, knots, nail holes, or other damage.

PREPARE:

- S-184 (for patching or filling textured surfaces)
- Smooth Edge Trowel (for applying S-184)
- Sanding Block (use medium grit sandpaper for smoothing rough areas of the patch)
- S-185 Latex Primer (for a superior bond)
- Short Nap Paint Roller (for applying S-185)

IF INSTALLING OVER:

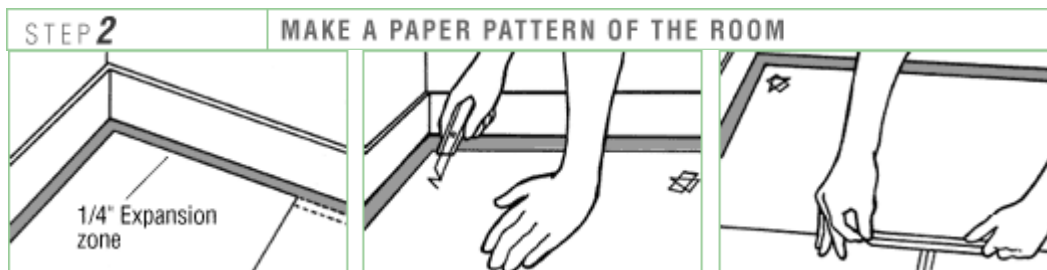
Concrete/Ceramics

INSPECT:

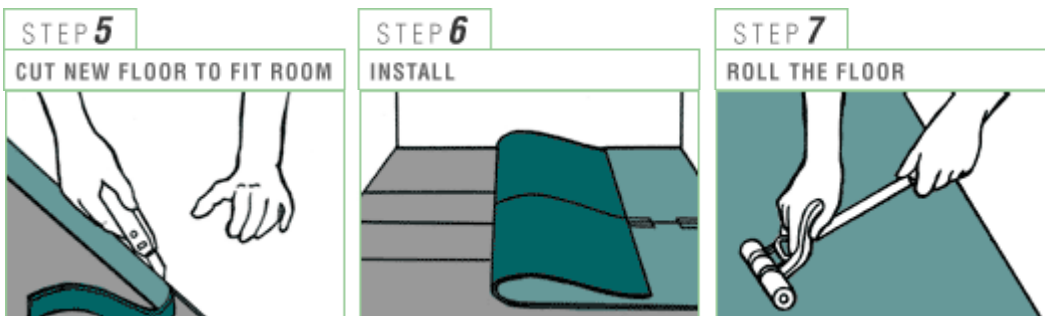
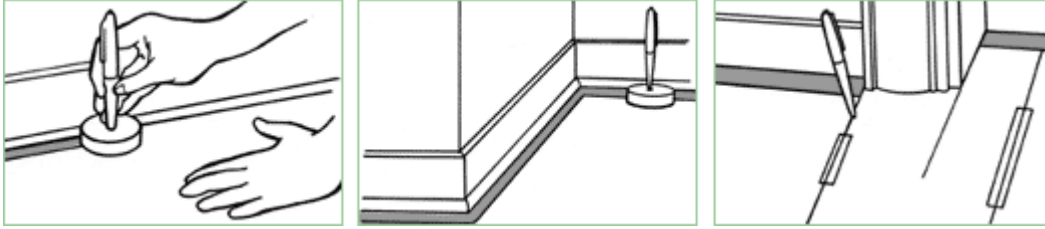
Must be clean, dry, and dust free. Check for cracks, scaling, levelness, and other damage. If installing over ceramic tile, terrazzo, or marble, insure that the tiles are firmly bonded.

PREPARE:

- S-184 (for patching or filling textured surfaces)
- Smooth Edge Trowel (for applying S-184)
- Sanding Block (use medium grit sandpaper for smoothing rough areas of the patch)
- S-185 Latex Primer (for a superior bond)
- Short Nap Paint Roller (for applying S-185)



STEP 3 TRACE PERIMETER OF ROOM ONTO PATTERN



Installation Instructions for Vinyl Sheet Flooring

FINISHING UP & CARE INSTRUCTIONS

Finishing

- Remove any excess adhesive from the flooring surface immediately after installation. Lightly dampen a clean, white cloth with mineral spirits, and wipe over the adhesive. Change the area of the cloth frequently as the adhesive is removed.
- When finished installing, roll the floor to make sure flooring is firmly bonded to subfloor.
- Replace baseboard molding.
- Carefully move furniture and appliances back into the room using hardboard panels to protect new floor.

Care Instructions

- Sweep or vacuum regularly.
- Wash regularly with a no-rinse floor cleaner such as Armstrong Once 'n Done Floor Cleaner.
- Do not use soap-based detergents, abrasive cleansers, or "mop and shine" products.

- They can leave a film on your floor.
- To restore the shine, polish with a liquid floor polish such as Armstrong Shinekeeper Floor Polish. Do not use paste wax or solvent-based polishes.
 - Use floor protectors on chair and table legs to distribute furniture weight and protect against indentation damage.
 - Use natural-fiber mats at outside doorways to reduce tracked-in dirt, stains and moisture. Do not use mats with rubber backing which can cause permanent discoloration.